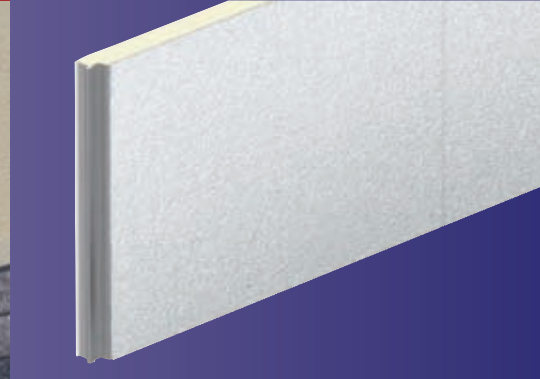
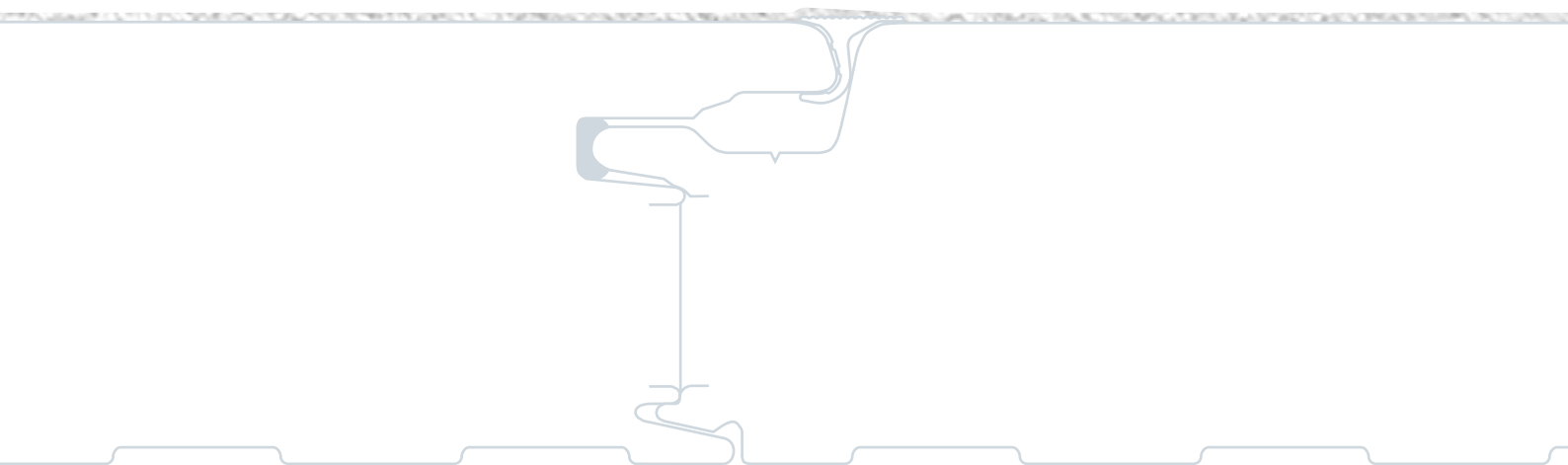


INSULATED WALL SYSTEM



Kingspan :Render Panel

Pre-rendered Insulated Panel System



Approved to LPS 1181
Certificate No. 186a & 260a





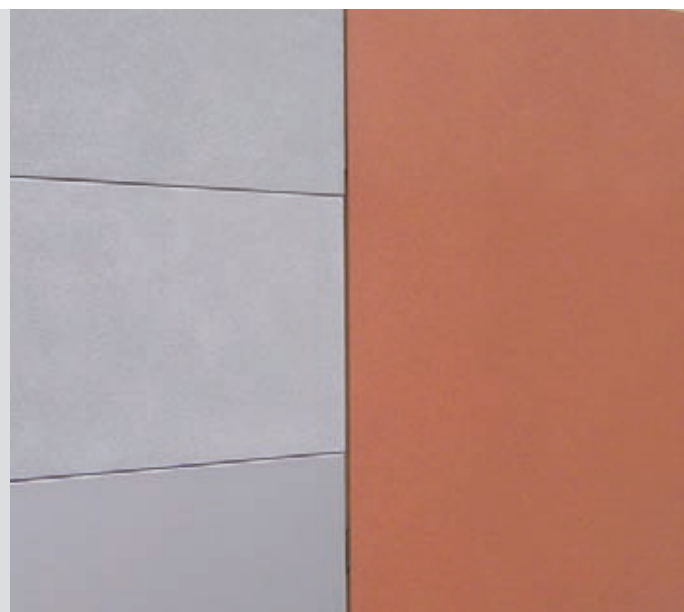
Introduction

Kingspan Render Panel is an insulated wall system with a pre-rendered finish which is applied under controlled factory conditions, providing consistency in colour, texture and flatness.

Kingspan Render Panel offers designers and specifiers a comprehensive range of aesthetic wall solutions for horizontal and vertical applications. Available in cover widths of 600, 900 or 1000mm wide, it can create attractive contemporary buildings, where aesthetics and visual impact are a key requirement. The panels are available in Kingspan's Architectural Wall Panel (AWP) profiles, offering a striking blend of appearance options.

Kingspan Render Panel offers the ideal solution for all projects such as apartments, offices, retail, leisure, education and healthcare and is suitable for both refurbishment and new projects.

The paper we have printed on is from 80% post-consumer waste and the remaining 20% pulp is TCF (Totally Chlorine Free). This fibre is FSC certified (see fsc.org for details). In recognition, the range has been awarded both the NAPM and Eugropa recycled marks, two of the most prestigious and recognisable recycled certificates available. The ink we have used is vegetable based, allowing the document to be recycled.



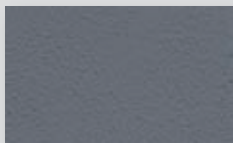
Benefits

- The pre-rendered coating has a life expectancy of up to 40 years*.
- Innovative joint gasket minimising visual impact.
- A non-gasket version is available to emphasize the joint.
- Suitable for vertical or horizontal application.
- Factory applied render creating consistency of colour, texture and flatness over the whole elevation.
- The rendered texture is also available on KS1000 LS Longspan™, Kingspan's frame to frame insulated wall panel system.
- The need for wet trades on site is eliminated and therefore removes the risk of splashing over other finishes.
- Less vulnerable to weather interruptions and associated variations in finish than traditional wet applied render.
- Design flexibility - easily integrates with other Kingspan insulated panel systems.
- Single point responsibility - one contractor installing the system.
- Durability / weather testing to DIN 5021 & BS EN ISO 9227 salt spray and DIN 52104 for Freeze/Thaw.
- Clear, simple pricing structure providing a cost effective solution.
- Property & Business Protection - Loss Prevention Certification Board (LPCB) LPS 1181 certified insurer approved **FIREsafe** systems deliver certainty of performance and insurability.
- **ECOsafe**, environmentally sustainable PIR insulation core, low GWP (Global Warming Potential) and non-deleterious.
- Available with the Kingspan Total Panel Guarantee, offering up to 25 years thermal and structural performance guarantee.
- Simple detailing to maximise air leakage performance.
- Full installation training and technical support available.
- System fully tested to the Centre for Window and Cladding Technology (CWCT) standards.
- Easily integrates with other elements such as doors, apertures, brick, stonework and glazing.
- **FIBREfree** - No threat of loose fibres into internal environment.

*NB - Coating will require repainting every ten years in order to comply with guarantee.



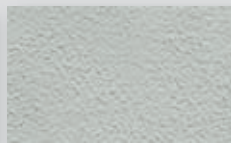
Colour Range



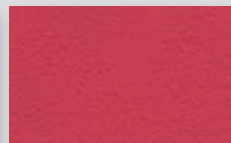
Merlin Grey
BS 18B25
RAL 180 40 05



Adventura
RAL 7000



Moonstone
RAL 7035



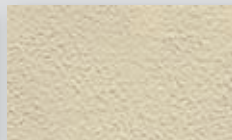
Strawberry Red
RAL 3018



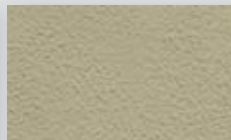
Sky Blue
RAL 5015



Pearl
RAL 9010



Cream
BS 10C31
RAL 1015



Mushroom
BS 10B19
RAL 080 70 10



Autumn
RAL 040 50 20



Sunflower Yellow
BS 10E55

Please Note: The printed colours are as accurate as possible but are for guidance purposes only. Samples can be requested from the Kingspan Marketing Department on 01352 717251. A larger range of pastel colours are available on request.

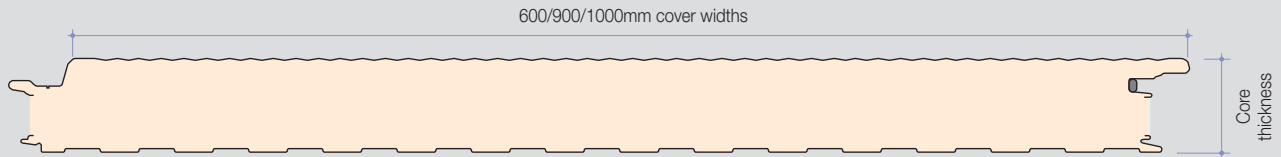
Product Data

Application

KS1000 RP is pre-rendered insulated wall panel, secret fixed system which can be laid horizontally and vertically. It is suitable for all building applications except where there are low temperature controlled environments.

Product Reference	Application Description
KS600/900/1000 RP	Kingspan Render Panel, pre-rendered insulated panel with Loss Prevention Certification Board (LPCB) approval for wall applications.

Dimensions & Weight



Core Thickness (mm)	45	60	70	80	100
Weight kg/m ² *	13.5	14.1	14.5	14.9	15.7

* Weight indicated is for the panel only and not the completed system.

Product Tolerances

Cut to Length (mm)	-5	+5
Cover Width (mm)	-2	+2
Thickness (mm)	-2	+2
End Square (mm)	-3	+3
Flatness per metre (mm)	-2	+2

Profiles Available

KS1000 RP insulated panels are available in Kingspan's AWP profiles. Further information is available from the Kingspan Marketing Department.

Materials

Substrate

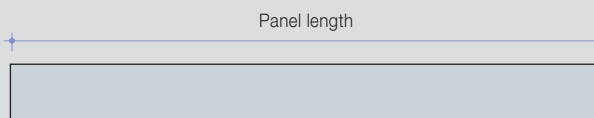
Standard external and internal sheets are hot dipped S220GD + ZA zinc/aluminium coated metal to BS EN 10326: 2004 (Continuously hot-dip coated strip and sheet of structural steels. Technical delivery conditions).

Coatings - External Weather Sheet

KS1000 RP external side coating consists of up to 3mm thick 100% acrylic polymer with stucco render finish (200 micron high performance plastisol coating). Standard colours are shown on page 3. Reverse side of sheet coated with a light grey polyester coating.

Available Lengths

Standard lengths 1.8 to 8 metres. Panels less than 1.8m long can be supplied and are subject to an extra charge. Panels 8 to 16 metres long can be supplied and will be subject to extra charge.



These panels cannot be end lapped.

Coatings - Internal Liner Sheet

- **Bright White Polyester:** Coating developed for use as the internal lining of insulated panels. Standard colour is 'bright white' with an easy clean surface.
- **Kingspan Aquasafe 200:** 200 micron thick coating used in areas where there is high internal humidity, or a corrosive environment.
- **Kingspan Cleansafe:** a chemically inert polymer film bonded to steel substrate for cladding of cold stores, food processing buildings and other hygiene applications.
- Reverse side of sheet coated with a light grey polyester coating.
- The sheet is available in either plain or stucco embossed finish.

Insulation Core

The core of KS1000 RP is an **ECOSafe**, environmentally sustainable PIR insulation which is non-deleterious with zero Ozone Depletion Potential (zero ODP).

Performance

Thermal Insulation

Panel Thickness (mm)	U-value* (W/m ² K)
45	0.46
60	0.38
70	0.35**
80	0.30**
100	0.23**

*Thermal transmittance W/m²K

**Recommended thicknesses to allow compliance with Building Regulations Approved Documents L2A & L2B (England & Wales), Technical Handbooks Domestic and Non-domestic Sections 6 (Scotland), Part F2 (Northern Ireland) and Part L (Republic of Ireland – based on the Overall Heat Loss Method).

Biological

KS1000 RP insulated panels are resistant to attack from mould, fungi, mildew and vermin. No urea formaldehyde is used in the manufacture of the panels.

Fire

KS1000 RP insulated panel system is **FIREsafe** approved by the Loss Prevention Certification Board (LPCB) to LPS 1181.

The steel outer and inner facings have a Class 1 fire rating to BS 476-7: 1997 (Fire tests on building materials and structures. Method of test to determine the classification of the surface spread of flame of products) and are Class 0 as defined by Building Regulations.



Specification

NBS Specifications are available from Kingspan **envirocare**[®] Technical Services.

Tel: 0800 587 0090 (UK) & +353 (0) 42 96 98529 (Ireland)

Email: envirocare@kingspanpanels.com



Quality

KS1000 RP insulated panels are manufactured from the highest quality materials, using state of the art production equipment to rigorous quality control standards, approved to BS EN ISO 9001: 2000 (Quality management systems. Requirements). Kingspan manufacturing plants are BS EN ISO 14001: 2004 (Environmental management systems. Requirements with guidance for use) and BS OHSAS 18001: 2007 (Occupational health and safety management systems. Requirements) accredited.

Guarantees

KS1000 RP insulated panels are available with the Kingspan Total Panel Guarantee, offering up to 25 years thermal and structural performance guarantee.

Delivery

All deliveries (unless indicated otherwise) are by road transport to project site. Off-loading is the responsibility of the cladding contractor or installer.

Acoustics

All KS1000 RP insulated panels have a single figure weighted sound reduction $R_w = 24$ dB.

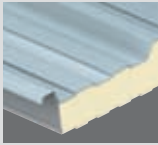
Sound Reduction Index (SRI) Tested

Frequency (Hz)	SRI (dB)
63	20
125	15
250	17
500	23
1000	18
2000	25
4000	40
8000	46

Kingspan Insulated Roof, Wall & Façade Systems

Roof Systems

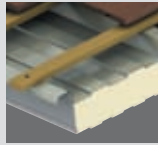
KS1000 RW
Trapezoidal



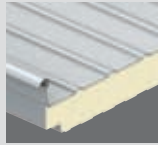
KS1000 SF
Secret Fix



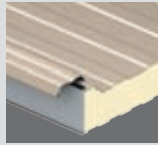
KS1000 TS Slate
& Tile Support



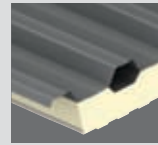
KS500/1000 ZIP
Kingzip® Standing
Seam



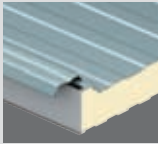
KS1000 LP
Lo-Pitch



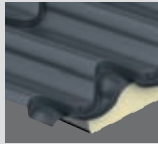
Kingspan
EnergiPanel™



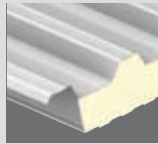
KS1000 CR
Curved Roof



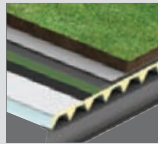
Kingspan
Roof Tile



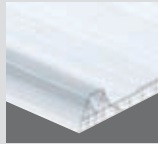
KS1000 FC
Box Profile



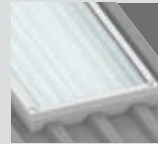
Kingspan
Envirodek®



Kingspan
Polycarb Rooflight



Kingspan
Upstand Rooflight

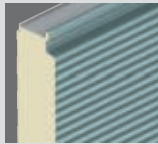


Wall & Façade Systems

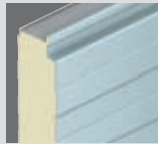
KS600, 900
& 1000
Optimo™



KS600, 900
& 1000 MR
Micro-Rib



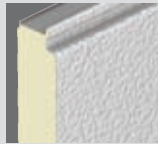
KS600, 900
& 1000 EB
Euro-Box



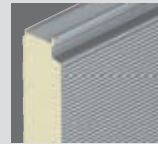
KS600, 900
& 1000 FL
Flat



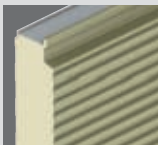
KS600, 900
& 1000 FL-S
Stucco



KS600, 900
& 1000 MM
Mini-Micro



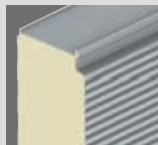
KS600, 900
& 1000 CX
Convex



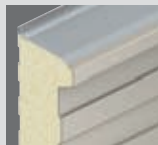
KS600, 900
& 1000 WW
Wave



KS600, 900
& 1000 LS
Longspan™



KS1000 RW
Trapezoidal



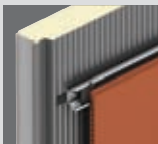
KS1000 FC
Box Profile



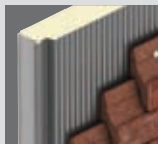
Kingspan
EnergiPanel™



Kingspan
Thermatile



Kingspan
Thermabrick™



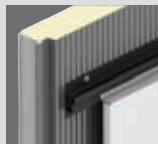
Kingspan
Thermastone



Kingspan
WoodTherm®



Kingspan
Thermatallic™



Kingspan
Render Panel

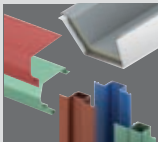


Kingspan
Wall-Lite



Ancillaries

Gutters, Tophats
& Flashings



Kingspan Limited

UK: Telephone: +44 (0) 1352 716100 Fax: +44 (0) 1352 710161 Email: info@kingspanpanels.com
Ireland: Telephone: +353 (0) 42 96 98500 Fax: +353 (0) 42 96 98572 Email: sales.ire@kingspanpanels.com

Details for the following countries; Australia, Belgium, Czech Republic, France, Germany, Hungary, Netherlands, New Zealand, Norway, Poland, Romania, Slovakia & Sweden can be found by visiting our website www.kingspanpanels.com or our group website www.kingspan.com

Care has been taken to ensure that the contents of this publication are accurate, but Kingspan Limited and its subsidiary companies do not accept responsibility for errors or for information that is found to be misleading. Suggestions for, or description of, the end use or application of products or methods of working are for information only and Kingspan Limited and its subsidiaries accept no liability in respect thereof.